

Spicing up the Business English Classroom

Marjorie Rosenberg

5th Annual Conference

‘Why we do what we do in ELT’

16th & 17th February 2019

Griffith College

Dublin, Ireland

ELT
Ireland



www.elpics.com
[@grahamstanley](https://twitter.com/grahamstanley)

*Why use supplementary activities?

They are :

- * adaptable
- * relevant
- * flexible

They often require:

- * team work
- * cooperation



Students at the University of
Graz
Marjorie Rosenberg

*Who do we teach?

- University students
- Learners in adult education institutes
- Learners in private language schools
- Learners in in-company courses
- Others?



www.eltpics.com
@aClilToClimb

Marjorie Rosenberg

*What factors should activities include?

- Task-oriented
- Goal-oriented
- Purposeful
- Relationship-building
- Culturally sensitive
- Collaborative

www.eltpics.com
Marjorie Rosenberg



*Which soft skills should we teach?

- Turn-taking
- Active listening and responding
- Asking for and giving opinions
- Speculating and hypothesising
- Agreeing and disagreeing
- Asking for clarification
- Clarifying
- Reaching consensus



Marjorie Rosenberg
The Cooperative Tent

*What is important to our learners?

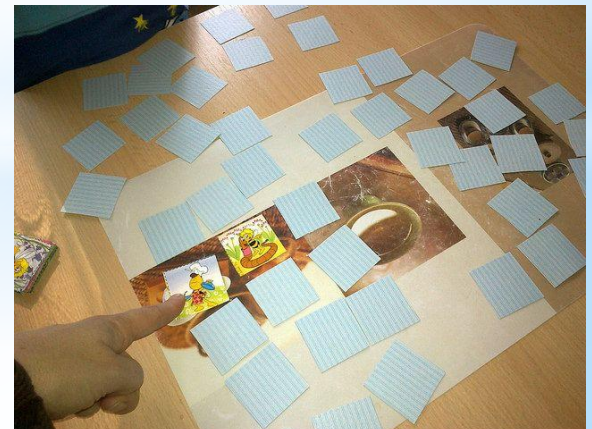
- A feeling of confidence
- Using the language
- Getting their message across
- Communicating with others
- Having vocabulary they need



*What types of activities can we offer them?

- Matching
- Dominoes
- Descriptions of words or pictures
- Problem solving
- Categorising
- Partner dictations
- Board games
- Role plays
- Speaking freely

www.eltpics.com
Hana Tichá



*Economic Indicators

- *Categorising words
- *Drawing and explaining graphs
- *Completing a text



www.eltpics.com
Marjorie
Rosenberg

www.eltpics.com
Marjorie Rosenberg

*Economic Indicators - key

Trends Grid

upward movement	downward movement	at the top	at the bottom	no change (horizontal movement)
rise go up recover increase take off grow improve jump shoot up rocket Additional words gain pick up strengthen climb	fall decline go down decrease deteriorate plunge plummet slip back drop slump Additional words dip weaken (usually used with currencies)	reach a peak Additional words peak	hit a low bottom out Additional words bottom out: to be about to improve after having reached bottom level trough: (economics) a very low level stagnate: to stop progressing	remain stable level off even out hold firm Additional words stabilise constant stagnate (negative meaning)

Note: fluctuation (fluctuate) indicates rapid change up and down

Adjective / Adverb Grid

Indicating size of change	Indicating speed of change
noticeable / noticeably significant / significantly considerable / considerably substantial / substantially slight / slightly moderate / moderately modest / modestly Additional words negligible / negligibly steep / steeply	quick / quickly rapid / rapidly consistent / consistently gradual / gradually steady / steadily slow / slowly sudden / suddenly sharp / sharply Additional words immediate / immediately

Note: dramatic / dramatically can be used to indicate both size and speed of change

*Communicative Business
English Activities*
Marjorie Rosenberg
Express Publishing 2018

1 The words/phrases below refer to sales trends and indicate upward, downward and horizontal movement and *top* or *bottom* position. Put them into the correct category.

soar bottom out increase grow decrease go down slip back plummet deteriorate even out
fall level off plunge take off hold firm jump decline rise shoot up slump remain stable
improve drop go up hit a low reach a peak rocket recover

Upward movement

Downward movement

At the top

***Digital resource -
Drag and drop exercise**

*Graph Gap Text- suggested answer key

Suggested Answer Key to Graph Gap Text:

In January, sales stood at \$145,000 in the Eastern region. The figures **(went up/rose/increased/grew/improved)** **(gradually/slowly)** until February when they **(reached a peak)** at \$160,00 for the current year. In March, they showed a **(steady/consistent)** **(decrease/decline/deterioration)** until they **(bottomed out at/hit a low of)** \$85,000 in September. The situation then **(improved)** **(dramatically/considerably/substantially)** and sales **(soared/jumped/rocketed)** **(suddenly/dramatically/substantially/sharply)** to \$150,000 until November where they began to **(level off/even out/hold firm)** until the end of the year.

*Departments in a company

- Descriptions and names
- Office layout - logic puzzle
- Telling guests how to find an office

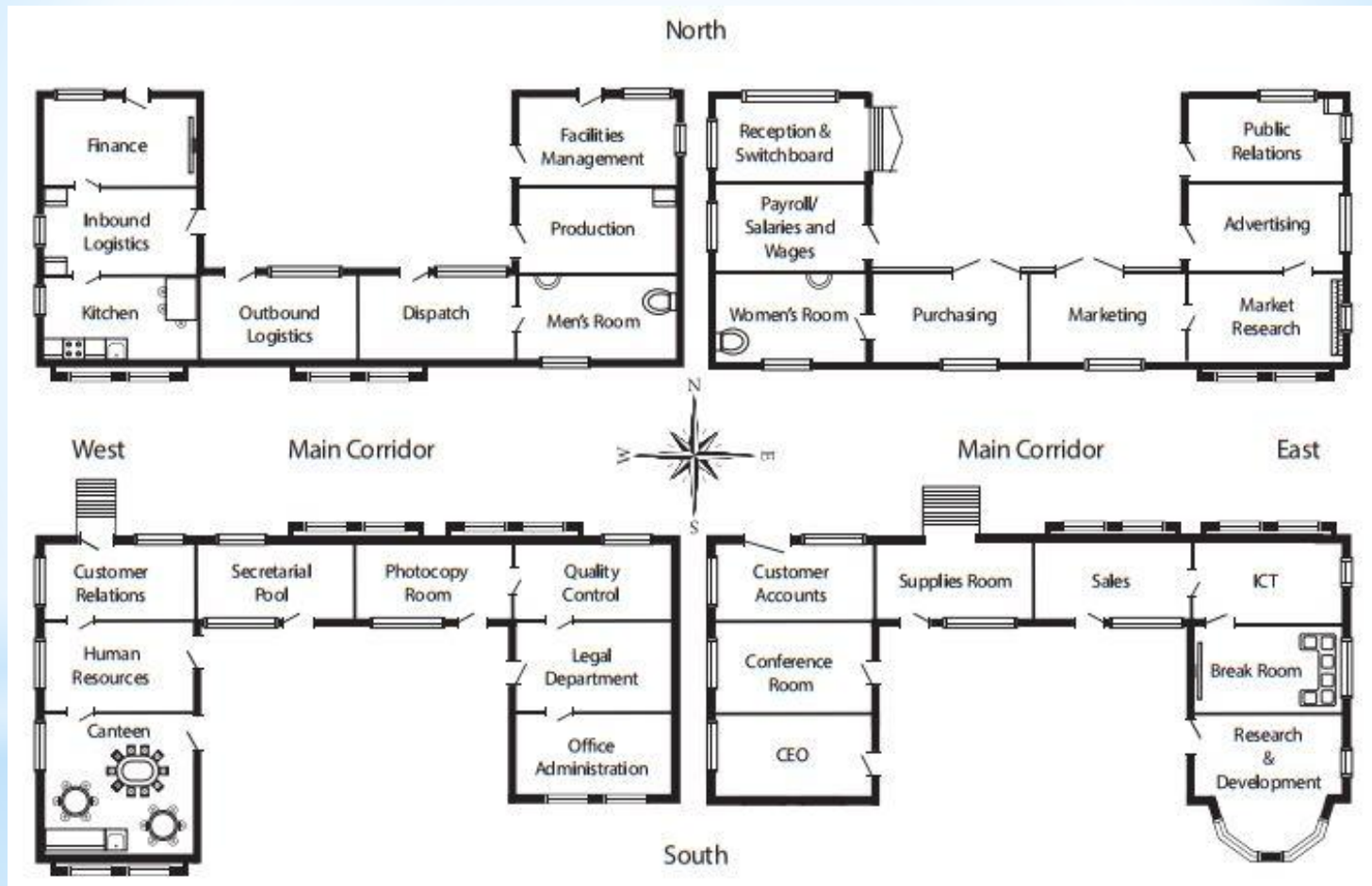


www.eltpics.co
m
Matina Katseli



www.eltpics.co
m
Roseli Serra

*Office layout - answer key



Communicative Business English Activities,
Marjorie Rosenberg, Express Publishing 2018

*Reflection

- Which activities would help your learners and why?
- Do you have any ideas for adapting the activities?
- What else do your learners need?



***Any Questions?**



Eltpics.com: photos taken from <http://flickr.com/eltpics> by Sue Annan, Matina Katseli, Marjorie Rosenberg, Roseli Serra, Hana Tichá, @aCLILtoClimb, @grahamstanley, @Victoria B52 used under a CC Attribution Non-Commercial license, <http://creativecommons.org/licenses/by-nc/3.0/>

Other photos: Marjorie Rosenberg

Activities taken from *Communicative Business English Activities*, Marjorie Rosenberg, Express Publishing

Available at <https://www.expresspublishing.co.uk> and *BEBC Ltd. - The Bournemouth English Book Centre*

For information on the digital activities contact: inquiries@expresspublishing.gr

 **Acknowledgements**

***Thank you for your
participation**

marjorie.rosenberg@drei.at



www.eltpics.com
@SueAnnan